



WizAudit

Fully audit Wizcon applications during project migration or maintenance

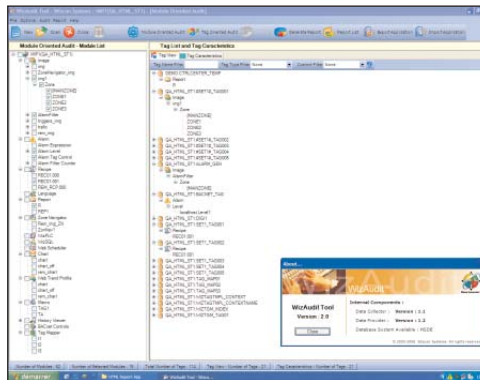
WizAudit™ is a valuable cross reference tool, useful to audit **Wizcon® Supervisor™** applications. It significantly improves both engineering and project efficiency. **WizAudit** is a **Wizcon** option usable with version 9.1.6 or later.

Objectives:

- Provide comprehensive information on the structure of your application
- Generate personalized reports of application structure

Typical uses:

- Migration or upgrade of a **Wizcon** application
- Maintenance of **Wizcon** applications



○ KEY FEATURES

- Import/Export **WizAudit** data from/to another PC
- Use over a **Wizcon** network
- Build a database of **Wizcon** tags

WizAudit allows you to build a database, which gives you a complete picture of your **Wizcon** application. You can then interrogate it in many ways, using two modes of operation:

Tag-oriented mode

In this mode, you can see all tags that are used in a particular module. For example, you can see a list of tags (and their properties) that are used in a single or multiple images. The same is true for every module in the product!

Module-oriented mode

Conversely, you can select a tag and see in which modules it is used.

○ MAIN BENEFITS

- Audit an application
- Easily upgrade an application you did not develop
- Simplify maintenance
- Optimize engineering and project efficiency
- Accelerate development time
- Avoid human error
- Reduce development costs

ELUTIONS Inc.
 1300 East 8th Avenue
 Suite S-200
 Tampa, FL 33605
 USA
 tel +1 813 371 5500
 fax +1 813 371 5501
 info@elutions.com

Wizcon Systems SAS
ELUTIONS Europe
 Parc Technologique de Lyon
 12 allée Irène Joliot-Curie (Bât. B1)
 F-69791 Saint-Priest Cedex
 France
 tel +33 (0)4 72 47 98 98
 fax +33 (0)4 72 47 98 99
 info@wizcon.com

www.elutions.com

