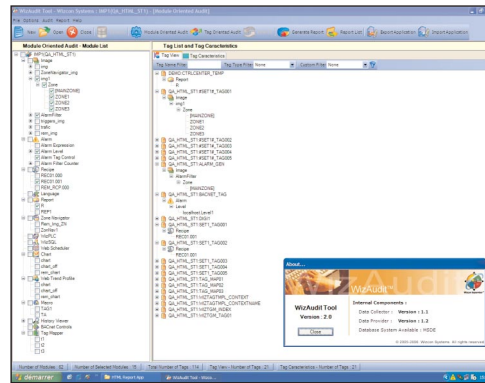


## WizAudit



Fully audit  
Wizcon applications  
during project migration  
or maintenance

### Product description

WizAudit is a valuable cross reference tool, useful to audit Wizcon applications. It significantly improves both engineering and project efficiency.

WizAudit is a Wizcon option, usable with version 9.1.6 or later.

#### Objectives:

- Provide comprehensive information on the structure of your application
- Generate personalized reports of application structure

#### Typical uses:

- Migration or upgrade of a Wizcon application
- Maintenance of Wizcon applications

### Key Features

- Import/Export WizAudit data from/to another PC
- Use over a Wizcon network
- Build a database of Wizcon tags

WizAudit allows you to build a database, which gives you a complete picture of your Wizcon application. You can then interrogate it in many ways, using two modes of operation:

#### Tag-oriented mode

In this mode, you can see all tags that are used in a particular module. For example, you can see a list of tags (and their properties) that are used in a single or multiple images. The same is true for every module in the product!

#### Module-oriented mode

Conversely, you can select a tag and see in which modules it is used.

### Main Benefits

- Audit an application
- Easily upgrade an application you did not develop
- Simplify maintenance
- Optimize engineering and project efficiency
- Accelerate development time
- Avoid human error
- Reduce développement costs