

## WAGO Ethernet Importer

**Accelerate development of Wizcon applications:  
Automate the import of WAGO I/Os as Wizcon tags**

### Product Description

The **WAGO® Ethernet Importer** for Wizcon is a tool that enables application developers to easily and rapidly import variables defined in a WAGO Ethernet Controller directly into **Wizcon® Supervisor™**. The add-on calculates the Modbus® addresses, a cumbersome procedure that previously had to be done manually by the programmer. Just a few mouse-clicks are needed to import variables from WAGO I/Os as tags in Wizcon. If necessary, the integrated rule editor can be used to modify the variable names to suit the visualization requirements.

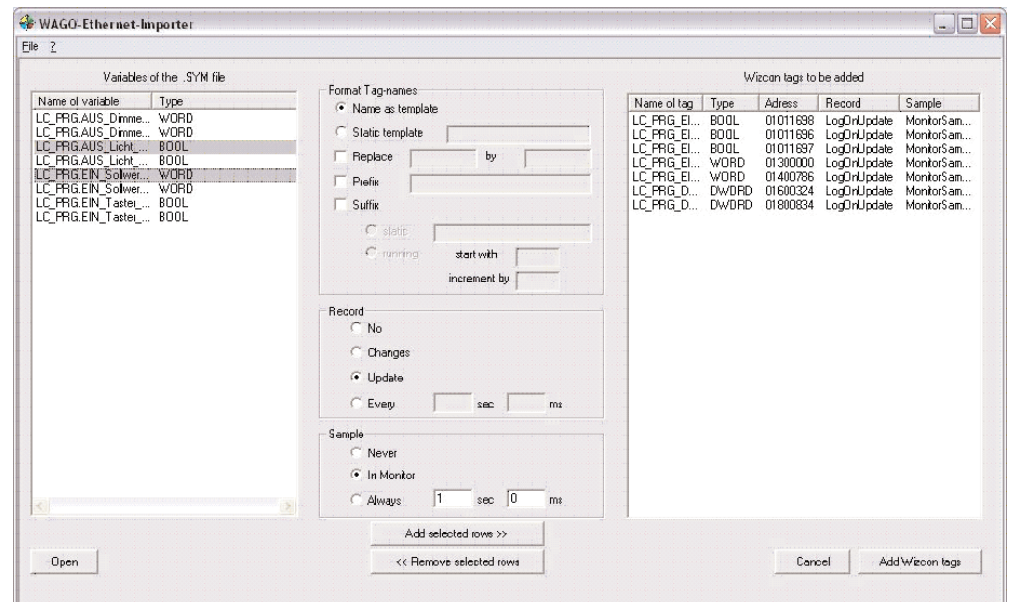
The **WAGO Ethernet Importer** is free of charge. It comes standard on the CD-ROM of **Wizcon Supervisor 9.1.6** or later versions.



### Main Benefits

- Accelerate development
- Avoid human error from manual entry
- Simplify development
- Reduce development costs

A User Guide is provided in English, French and German.



The simple one-screen tag importer exists in English, French and German, with associated user guides. It is free of charge, available from either WAGO Contact or Wizcon Systems.